

GEORGE ENGELMANN
BOTANICAL NOTEBOOKS

Pagination Note:

Since many of the items lack a specific page number, the page number displayed online refers to the sequentially created number each item was given upon cataloging the materials.

L. purpurella from N.Y. to Wis.
Mo. Fla. Cuba. & Panama.

L. trinervis, N.Y. to Wis.

L. minor, var occurs in La. & ~~Arizona~~ ^{Texas} Eto.

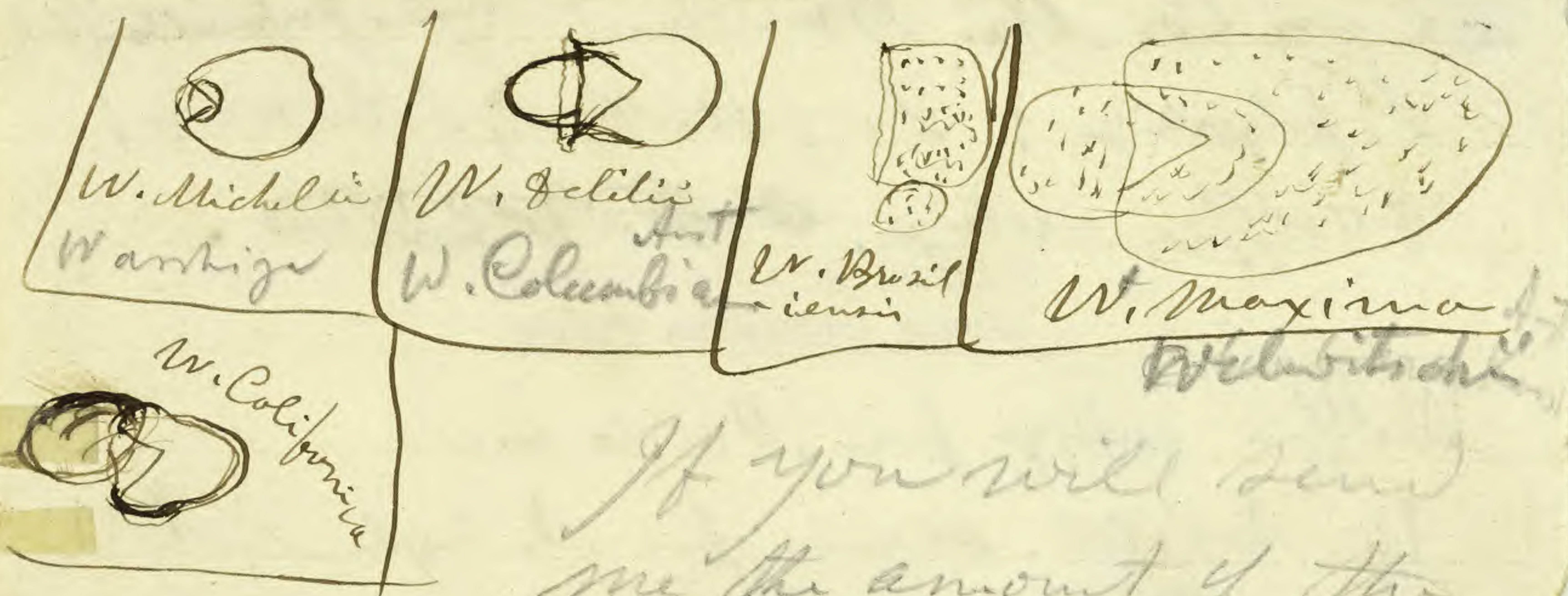
L. gibba var. ^{No!} is ^{very minor} N.Y. to Mo. &

La. The true species occurs in the
South west!

L. trisulca has been found sterile since
Recherche N.Y.!

L. gibba & *L. polyrrhiza* are
both the *Wolffias* or ^{always} sterile with
us or for.

CA,



If you will send
me the amount of the
postage on the things
for Engelmann I will
send it. CA



0 1 2 3 4 5 6 7 8 9 10

cm

copyright reserved



MISSOURI
BOTANICAL
GARDEN

1881

Dr. Engelman's *Lemna*, Dec. Jan. 7/67

Cover Elliott & Palmer No. 445. *L. gibba*
old Guarani St. Louis *L. gibba*, var. minor
" " " " *polyrrhiza* var.

A Fender N. Mex. 1847. *L. minor* in flower.
(ovule half-anatropous!) also *L. trisulca*

"*Lemna trisulca* St. Louis" partly correct but
mixed with *L. polyrrhiza* & *L. Torreyi*.

"*Lemna*, Arkansas bottom, 1834" is
L. polyrrhiza & *L. Torreyi*.

Cover Elliott & Palmer No. 447. *L. Torreyi*.

"Detroit No. 1." *L. trisulca*.

" " " 2 " " *polyrrhiza*.

"*L. umbonata*" *L. polyrrhiza*.

"*Lemna* St. Louis 1841" *L. polyrrhiza*;
L. papuilla! (fertile)!

"Can Co. Mo. Broadhead" *L. papuilla* (fertile)
L. polyrrhiza; *L. gibba* var.; *L. trisulca*;
Wolffia arhiza, ~~Wolffia arhiza~~.

MISSOURI BOTANICAL GARDEN
GEORGE ENGELMANN PAPERS

Wolffia arhiza from Mo. is new.

W. delili occurs from N. England to
Wis. ~~Pa.~~ & La.

L. Torreyi from N. J. to S. Cal. Fla.
Cal. S. Mo.



Copy

St. Louis Jan. 1st 1867

Estate of Peter Blow dec^d

to Dr George Engelmann

to medical attendance in his last illness

from June 8th to July 21st

64 Visits in town and 10 Visits

in Carondelet, including \$350.

Surgical attendance



0
cm

1

2

3

4

5

6

7

8

9

10

copyright reserved



MISSOURI
BOTANICAL
GARDEN

Samoa perpusilla Forst. & Muller rotata Regel
Stanton island; Wayne Co Pa; West
Western Missouri; Boone Mo; near
Sookeburg on Boone Pa; West.

P. paucis rotata Hayden. Common on the hills
at St. Louis, near St. Charles Colo 1841
with rotata a mistake ? 3215

d. minor New York Stanton, West, West,
Illinois, Missouri, Pa. New York near
Stanton by West. perpusilla substit
at St. Louis near St. Charles.

As the form near St. Louis & West.
Colo 1841 Orange Mo. (small
perpusilla to minor by West) also is
minor

MISSOURI BOTANICAL GARDEN
GEORGE ENGELMANN PAPERS

7882



0 1 2 3 4 5 6 7 8 9 10

cm

copyright reserved



MISSOURI
BOTANICAL
GARDEN

Ovules of Lemnaceae

Nov 1880

Herbarium & my own
obs.

Atrop: Wolffia omnes
L. paucicostata ...
L. purpurilla
L. veldiana



Exostome wide open
Endostome
exsert

hemianatrop. L. minor
L. bisulcata
L. polyrrhiza



Exostome open
Endostome visible

Exostome closed

anatrop. L. gibba



Spiral vessel only (1) - fundulus
of L. gibba
L. polyrrhiza

over



0 1 2 3 4 5 6 7 8 9 10

cm

copyright reserved



MISSOURI
BOTANICAL
GARDEN

7883



No 2800 OLIVE

STREET,

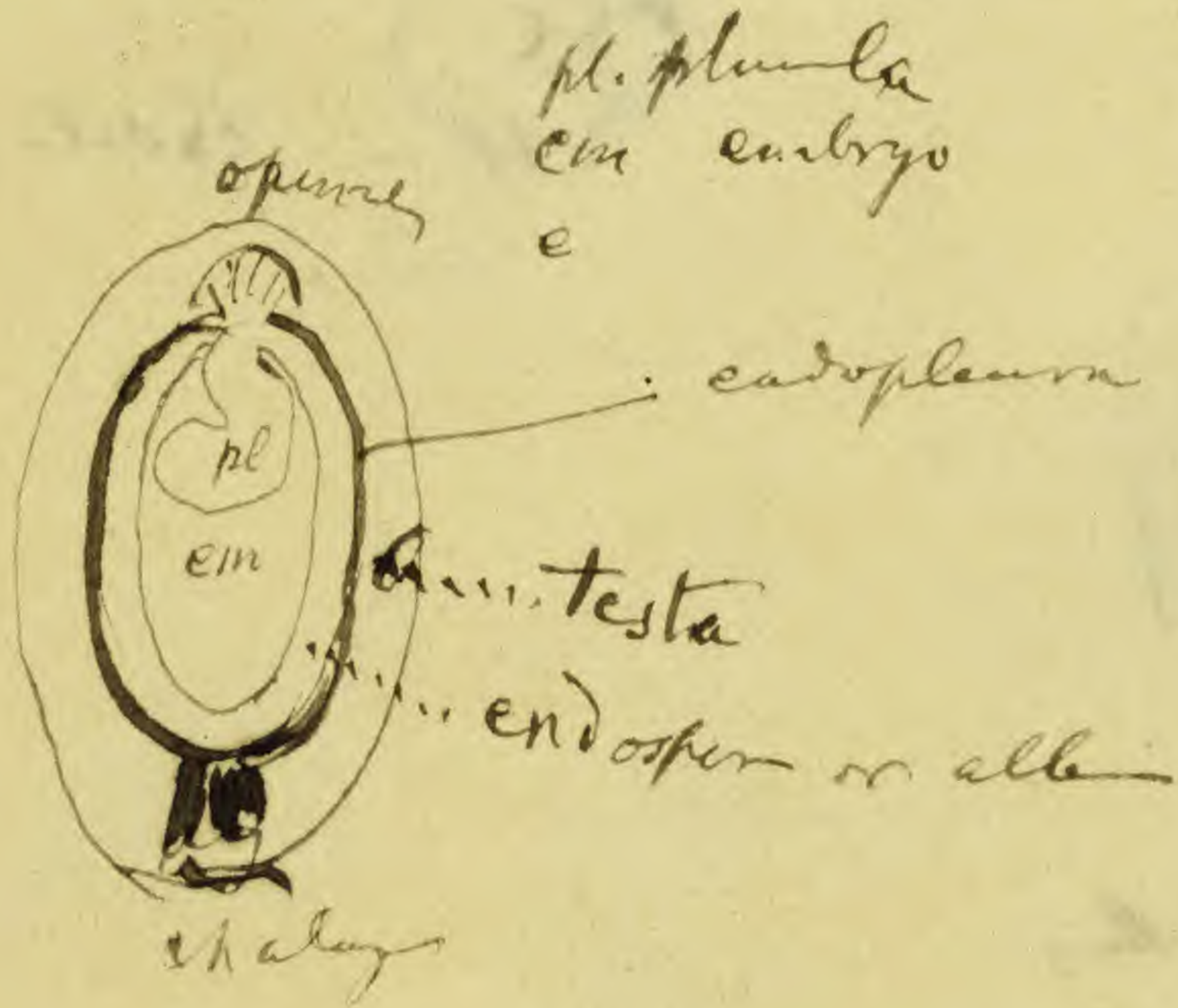
ST. LOUIS, MO.

S.W. CORNER OF PRATTE AV.

J. C. KIRTLAND & CO. DRUGGISTS

Spizella socialis arctica Schleiden
in *Linnæus*

Spizella arctica sputant!
flammas anteriores prius
evolutum



MISSOURI BOTANICAL GARDEN
GEORGE ENGELMANN PAPERS



0 1 2 3 4 5 6 7 8 9 10

cm

copyright reserved



MISSOURI
BOTANICAL
GARDEN

Indian Lemnaceae

Journ. Lin. Soc.

vol 9, p. 264. (June 1866)
at tab.

Schleiden Linnaea 13, p. 385
(1839)

273

1839



0 1 2 3 4 5 6 7 8 9 10

cm

copyright reserved



MISSOURI
BOTANICAL
GARDEN

MISSOURI BOTANICAL GARDEN
GEORGE ENGELMANN PAPERS

7884

212

8/174
8/2668

8/3643
8/689

8/369

8/2954

2954 : 800000

ST. LOUIS, January 1867.

ROOM NO. 2 UP STAIRS.

812 North Third Street,

ERNST SPIERING,

619
521
639
216



0 1 2 3 4 5 6 7 8 9 10

cm

copyright reserved



MISSOURI
BOTANICAL
GARDEN

Nov 11 1870

Linna polytricha (and others 1 seeded *Linnaea*)
Microspyle (exostome & endostome) directed forward
as well as
first developed stamen!

fruit utricle bulged out mostly backward
and backward the dark spot on end of seed is
seen through utricle. This dark spot is ~~the Chalaza?~~
the Chalaza

MISSOURI BOTANICAL GARDEN
GEORGE ENGELMANN PAPERS

7885



0
cm

1

2

3

4

5

6

7

8

9

10

copyright reserved



MISSOURI
BOTANICAL
GARDEN

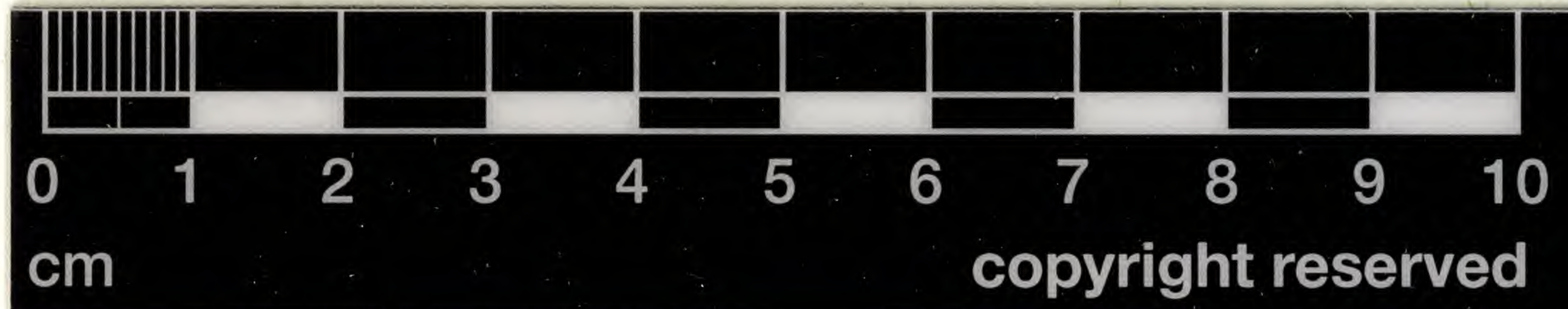
for your order of one order in Germany & more
#1
#2
#3
#4
#5
#6
#7
#8
#9
#10
#11
#12
#13
#14
#15
#16
#17
#18
#19
#20
#21
#22
#23
#24
#25
#26
#27
#28
#29
#30
#31
#32
#33
#34
#35
#36
#37
#38
#39
#40
#41
#42
#43
#44
#45
#46
#47
#48
#49
#50

Dear George,
Receipt of this is Mr. von Frobenius
George Engelmann M.D. Berlin Prussia

La Salle, Ill. Oct 27th 1870

AND
MANUFACTURERS OF SHEET ZINC,
Smelters of Spelter,
F. W. Matthiessen & Hegeler,

The manufacture of Zinc Ware, as Pans, Coal-
hods, Dishpans, Oilcans, and Blanks for the same
and other Zinc Ware, also of Zinc-Flavestroughs,
and Conducting Pipe has been transferred to the
ZINC ROOFING AND ORNAMENTS COMPANY,
118 South Franklin Street, Chicago.
All orders for such goods DIRECTED TO THIS CO.
will be filled with promptness.
The manufacture of Blanks for Washboards and
Reaper Linings will be continued here.
Zinc of usual dimensions constantly on hand.
Uncommon sizes and complicated patterns cut to or-
der at moderate charges.



copyright reserved



Leonna

- minor L.
- purpurilla Torr
- Angolensis Welw
- Torreyi Aust
- trisulca L
- melanorrhiza Mull & Kunz
- oligorrhiza Kunz
- polychiza L
- gibba L
- ? punctata Meyer Essig. 262 Kuntz 3.5

Wolffii

- arhiza Wimm Michxii Schleg
- Brazilensis Weddell
- Columbiana Karst
- hyalina Hegelm. Delilei Schleg.
- repanda Hegelm.
- Welwitschii Hegelm.



0 1 2 3 4 5 6 7 8 9 10

cm

copyright reserved



MISSOURI
BOTANICAL
GARDEN

Hawaii Aug 20 1867

Mr E B Booth

to Dr Engelmann

1865 August - Octob. to Mrs. attendance on Mrs Booth & S. -

1866 March & April

May & June

May

Sept.

August

July & Decemb

73. -

14. -

10. - 115

2. -

12. -

7886

MISSOURI BOTANICAL GARDEN
GEORGE ENGELMANN PAPERS



0 1 2 3 4 5 6 7 8 9 10

cm

copyright reserved



MISSOURI
BOTANICAL
GARDEN